

## 1. Connect in APP

### 1.1 Download and Install the APP

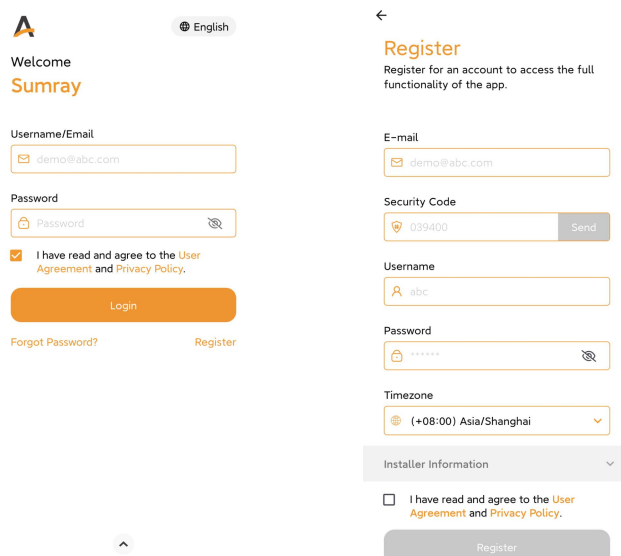
This series microinverter has built-in WIFI modular which is able to connect WIFI router directly.

Searching “Sumray” in App Store for iOS or searching “Sumray” in Google Play for Android, this app is for plant owner.

### 1.2 Registration

Open the app of “Sumray” and register an account.

Click the "Register" button, fill in the user information, and create your account here.



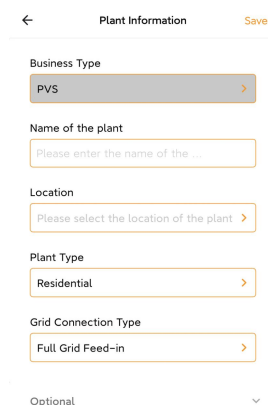
### 1.3 Create a Plant

Select "Create Plant" button.

Fill in the plant information and click the “Save” button to complete the plant creation.

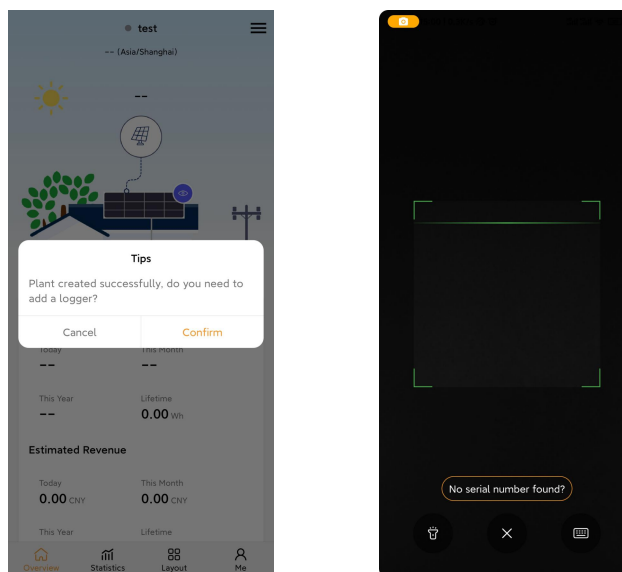


Create Plant

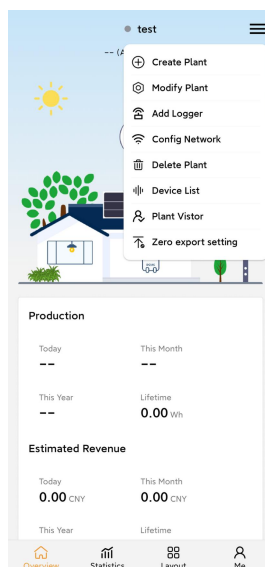



## 1.4 Add a Microinverter / Net Zero Controller

Click on “confirm”, then you can scan the barcode to add the microinverter / net zero controller, or you can manually enter the microinverter / net zero controller serial number by clicking the keyboard button.



If you accidentally click on “Cancel”, you can select “Add logger” in the menu to add the microinverter / net zero controller.



\*Note: A microinverter / net zero controller can only be tied to one plant, it can't be tied to other plant. And one plant can be tied to many microinverters.

## 1.5 Config Network

1. Select "Config Network " in the menu.
2. Before configuring the network, make sure the device is powered on.
3. Check the device to start configuring and select the appropriate Wi-Fi (it is recommended to use a 2.4GHz frequency band wireless network).
4. If there is no device, you can click on "Add Device" in the upper right corner, scan the code or manually enter the collector serial number, and then select the device to config the network again.
5. After successful configuration, you will be able to view the relevant power generation information in the App.

